



PROFILE

LOCATION: Block 2 Beach Close
Off Riviera Road
Ministries Annex, Accra-Ghana.

PHONE: +233 302 683206

MOBILE: +233 244 771707

EMAIL: info@esl-ghana.com
akarmah@yahoo.com

POSTAL: P.O. Box LG 239 Legon, Ghana

WEB: www.esl-ghana.com (under review)

Who we are

ESL Consulting Limited (ESL) (www.esl-ghana.com) specializes in the fields of Environmental Impact Assessment (ESIA) and Water Resources Development and Management. ESL is incorporated in Ghana under the company's code as a limited liability company. The core staff of ESL have been active on the Ghanaian and international environmental scene in the field of impact assessment for several years. The Company boasts of a core of highly-trained high-level manpower resource and several external consultants who are experts in several specific fields related to our core businesses. ESL consultants have been involved in several high profile environmental and social impact assessment and monitoring studies, notable among which are the following relevant examples:

- i. Eni (E&P) Environmental Impact Assessment for the Offshore Cape Three Points (OCTP) field (2015)
- ii. Eni (E&P) OCTP Environmental Monitoring Programme for Onshore and Offshore facilities installation in compliance with World Bank Commitments and Guidelines (2017-present) with Tecnoambiente (Spain) as subcontractors.
- iii. Tullow Ghana Limited (TGL) Jubilee Offshore Oil Development ESIA in collaboration with ERM (2009-10).
- iv. Tullow Ghana Limited (TGL) Tweneboa, Enyenra, Ntomme (TEN) Oil Field ESIA in collaboration with ERM (2013)

Policy Statement

Legislative instrument (LI) 1652 and Act 490 of the Parliament of the Republic of Ghana seeks to create a framework for the sustainable development and exploitation of natural renewable and non-renewable resources in Ghana. In line with Ghana's environmental policies and the World Bank's policies on sustainable development, ESL seeks to work together with proponents of undertakings (clients) to come to the most environmentally friendly way of achieving their developmental objectives.

ESL does this by linking with proponents at the inception stage of projects, conducting rigorous and high quality scientific studies and technical policy reviews on the proposed development, identifying the probable effects of the development on the economy and the environment, advising proponents on best approach method and preparing a comprehensive management and policy plan for the development.

How ESL Achieves its Goals

The *modus operandi* of ESL is an iterative one, with ESL coming into the project cycle at the inception stage. ESL then conducts a desktop study into the project, mainly made up of research in publications, academic journals, technical papers, grey literature, previous documents into similar or related development, and intensive consultations with stakeholders, interested and affected parties so as to identify the key issues pertaining to the undertaking. ESL then communicates this to the technical and economic analysis teams to assess and identifies the best ways to implement the project.

ESL Foundation

ESL Foundation was established in 2002 when we were known as Environmental Solutions Limited. It was aimed at providing technical and fundraising support to individuals and social enterprises. The foundation also encompasses other humanitarian responsibilities such as supporting the education of needy students and also empowering women and girls in diverse domains.

Our Core Businesses

The main focus of ESL Consulting Limited (ESL) can be grouped under the following two areas:

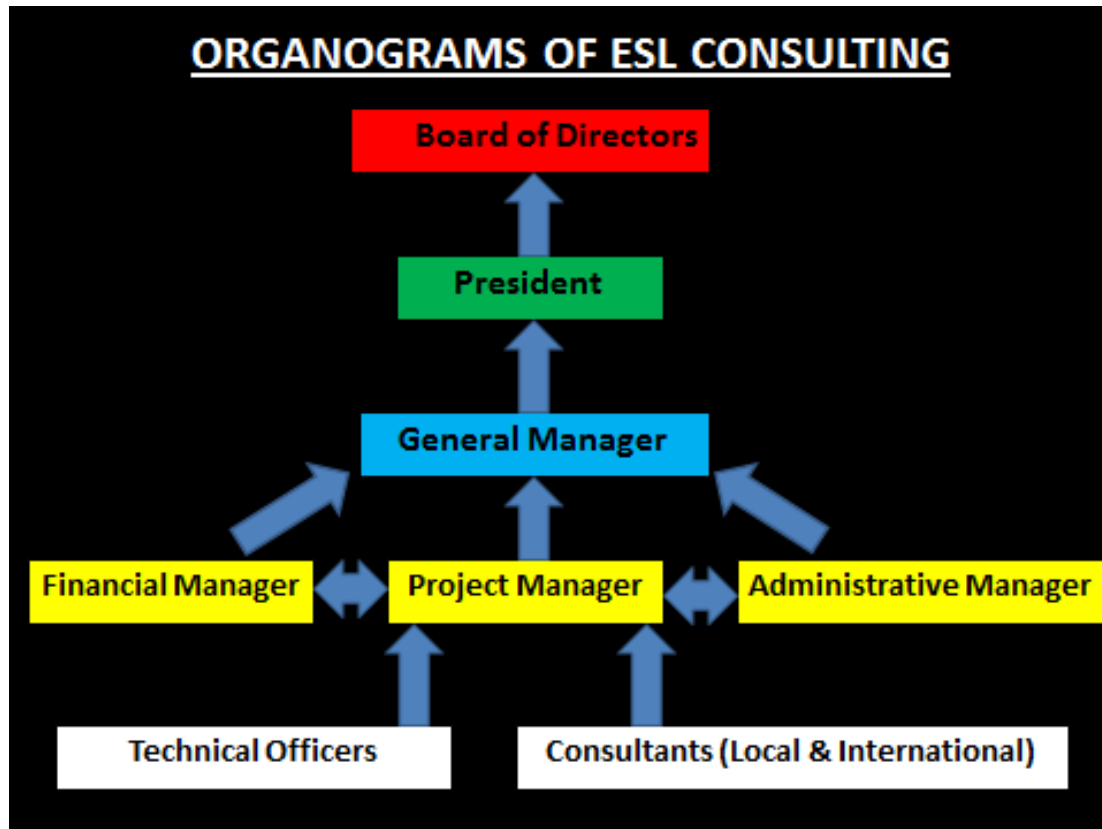
Environment

- Environmental Impact Assessment (EIA)
- Environmental Management Plans (EMP)
- Environmental Monitoring Studies (EMS)
- Environmental Sensitivity Analysis (ESA)
- Strategic Environmental Assessment (SEA)

Resources Development and Management

- Aquatic (Surface and Ground Water) Resources
- Coastal Resources Development & Management
- Social Development and Management

Organisational And Operational Structure



The ESL organizational structure of ESL is shown above. Each service or job to be done would have a Project Manager who liaises with the finance and administrative departments and reports to the General Manager. The General Manager reports to the President who in turn reports to the Board of Directors.

Collaborators

Our collaborators include, Envaserve Consult (Ghana), Geo-HydroConsult (Ghana), ERM (South Africa), CSA (Florida), Technoambiente (Spain) and CEHRT

Some Major Projects of ESL.

A. Environmental

- Eni OCTP Environmental Monitoring Programme for Onshore and Offshore facilities installation in compliance with World Bank Commitments and Guidelines (2017-present).

- China Harbour Engineering Company (CHEC) Tema New Port and Container Terminal Project Environmental Monitoring Programme in compliance with World Bank Commitments and Guidelines (2016-present).
- Ghana National Gas Company; Environmental Impact Assessment for the Essiama-Prestea Line of the Western Corridor Gas infrastructure Project (2015)
- ENi Environmental Social and Health Impact Assessment of the Outer Cape Three Points Block (Phase 2) onshore Ghana (2014-15).
- Globeleq Advisors/VRA: Environmental Impact Assessment for the Proposed Thermal Power Project at Aboadze (2014-16)
- MEDEA Environmental Permitting Process for a 3-D Seismic Exploration Activities in the East Cape Three Points area in the Western region of Ghana (2014).
- ENi/Saipem Environmental Social and Health Impact Assessment of the Outer Cape Three Points Block (Phase 1) offshore Ghana (2013-15).
- West African Gas Pipeline Company Limited (WAPCo)(2013). ESL was contracted by the WAPCo Environmental Management Plan (EMP) for the Ghana component of the West African Gas Pipeline onshore terminals at Tema and Takoradi.
- Rider Steel Ghana Limited 2012-2013. ESL carried out the ESIA for the Steel production plant at Tema, Ghana. The steel plant makes use of a water-cooled induction furnace with reduced environmental emissions for melting scrap and reprocessing it back to steel.
- Ghana Oil Services Terminal (OST) 2012. ESL undertook ESIA for the new OST in the Western Region of Ghana at Atuabo for Lonrho Ghana Limited (with ERM).
- Tullow Deep Water Tano Baseline Survey (2011). ESL undertook benthic infauna analyses component of the Deep Water Tano Environmental baseline studies in partnership (with CSA International).
- Tullow Jubilee Field Drill Cuttings Survey (2011). ESL undertook benthic infauna analyses for the Jubilee Field Drill Cuttings Study in partnership (with CSA International).
- Tullow Fisheries Study (2010-11). ESL undertook fisheries studies with ERM (Hong Kong) as part of the Jubilee Oil Phase I Development Project for Tullow Ghana Limited.
- MTN-West Africa Cable System (2009). ESL with ERM (South Africa) undertook onshore and offshore preliminary environmental assessment for the Ghana section of the international telecom cable for MTN Ghana Limited.
- Ghana Jubilee Offshore Oil Development EIA (2009). The Jubilee Field Phase One Development involves the extraction of hydrocarbon from an underground reservoir located in deepwater offshore Ghana in the Western Region, located 60 km from the land.
- West Africa Gas Pipeline (WAGP) project (2003-6).

ESL led the local counterpart team in the execution of the offshore and onshore EIA of the WAGP project. The terms of reference for the EIA sub-contractor was to generate a high-quality EIS acceptable to the proponent, World Bank, Ghana EPA and other interested groups worldwide, identifying all potential impacts and recommending appropriate mitigation and/or management plans within a very limited time schedule.

- Keta Sea Defense Works (KSDW) project (2001-5).

The KSDW was a huge project aimed at reducing the coastal erosion, reclaiming land and constructing a link road within the Keta area in the Volta Region of Ghana. Current ESL staff was involved, with other foreign counterparts, in the scientific study on the erosion problem, EIA and engineering design of the project. ESL was engaged in the EMS of the project which lasted 4 years.

- Saltpond Offshore Producing Company Limited (SOPCL) 2006.
ESL consultants produced the first EMP for SOPCL which is jointly operated by the Ghana National Petroleum Corporation (GNPC) and Lushann Eternit Energy Limited. for the period 2008-2011. The report appraised the existing environmental performance of the SOPCL activities and provided an EMP with recommendations for meeting international and local standards required for its operations.

ESL staff/consultants have also worked with the following clients:

- Halcrow New York (USA) - Tema and Takoradi Port Development Master Plans. Environmental Impact Assessment for Preliminary Environmental Report. (2008).

B. Aquatic Resources Development & Geotechnical Surveys

- **TechnipFMC**
 - i. Technip Ghana Ltd (2017). Provision of Hydrology Survey - Desktop Study for the delineation of potential drilling sites at the Eni Onshore Receiving Facility (ORF), Sanzule, Western Region, Ghana.
- **Eni Ghana (2014-2015)**
 - i. Assessment of Ground Water Potential (eni Contract No. 921224 Rev.1)
 - ii. Geotechnical Investigations involving drilling of 6 boreholes including laboratory tests (eni Contract No. 921224 Rev.2)
 - iii. Groundwater Investigations (hydraulic testing) involving Pumping Tests and Laboratory Analyses (eni Contract No. 921224 Rev.3)
- **AngloGold Ashanti**
 - i. AngloGold Ashanti Mines (2010). Ground Water Quality Monitoring, Borehole Infrastructure Assessment and Pumping Tests for One Hundred (100) Boreholes within the Obuasi, Ghana.
 - ii. AngloGold Ashanti - Surface and Ground water Quality Assessment of the Iduapriem Mine, Tarkwa, Ghana. (2008).
- **National Oil Company of Liberia (NOCAL)**
 - i. National Oil Company of Liberia Phase I (2009-2011). International consultancy to the Government of Liberia on the extension of the outer limits of the continental shelf of Liberia. The entire coastline of 700 Km was surveyed and basepoints established for the determination of baseline and maritime boundaries.

C. Social Services

- ESL manages AKER ENERGY-GNPC Scholars Project for over 400 students in 5 Senior High Schools located in the Western Region of Ghana. The scholars project is a social corporate responsibility activity of two oil and gas companies (HESS and GNPC) in Ghana. 2015 to date.